



DESIGN-GROW-BUILD

ECOLOGICAL LANDSCAPING
ECOLOGICAL CONSULTING
RAINWATER/GRAYWATER
HABITAT RESTORATION
CALIFORNIA NATIVE PLANT NURSERY

www.ecologicalconcerns.com

Office: 609 Pacific Ave, Suite 101, Santa Cruz CA

Nursery: 336A Golf Club Dr., Santa Cruz CA

Mailing: 125 Walk Circle, Santa Cruz CA

Office: (831) 459-0656

Fax: (831) 457-1606

CCL #778397

ROSICRUCIAN ALCHEMY GARDEN

SAN JOSE, CA



Photo by sfexaminer.com

PROJECT GOALS:

Create an Educational Alchemy Garden; Reduce Water Hungry Lawn with Functional Garden

SERVICES PROVIDED:

Landscape Design, Rebate Assistance, Native Plant Selection, Lawn Replacement, Sheet Mulching, Drip Irrigation Retrofit, Landscape Construction, Low-Maintenance Planting

OWNER:

The Rosicrucian Order, AMROC

PROJECT VALUE:

\$45,000

MONEY BACK THROUGH REBATE PROGRAMS:

\$8,000



PROJECT DESCRIPTION:

A previous turf areas was converted to an alchemy garden where students study ancient alchemic plants. The garden now has elements of fire, earth, air and water. There is different colored recycled grass inlaid into steel borders to separate and distinguish the four elemental gardens. Under the recycled glass lays rope lighting making the garden just as interesting in the day as the night.

ROSICRUCIAN LAWN REPLACEMENT

SAN JOSE, CA



PROJECT GOALS:

Lower Irrigation Needs, Landscape Beautification, Increased Habitat, Returned Funds Through Various Available Rebate Programs

SERVICES PROVIDED:

Landscape Design, Rebate Assistance, Native Plant Selection, Lawn Replacement, Sheet Mulching, Drip Irrigation Retrofit, Landscape Construction, Low-Maintenance Planting

OWNER:

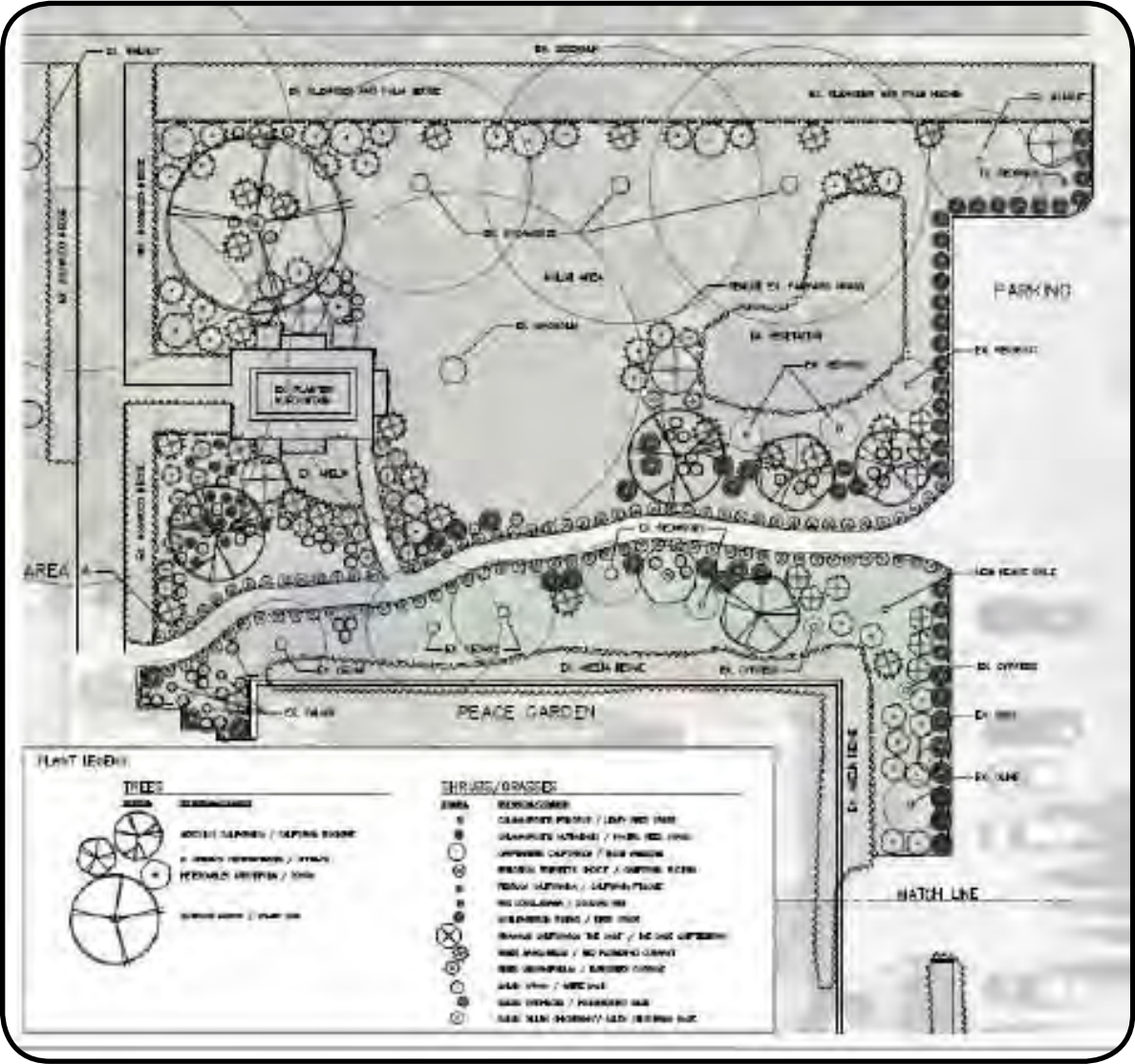
The Rosicrucian Order, AMROC

PROJECT VALUE:

\$120,000

MONEY BACK THROUGH REBATE PROGRAMS:

\$32,000



PROJECT DESCRIPTION:

The Rosicrucian Egyptian Museum in San Jose has been stepping up to water conservation by removing acres of turf from various gardens in and around their beautiful park. Management at the park worked with ECI over five years to slowly transform several of their gardens into wild native habitat gardens with Egyptian themes. ECI has converted 75% of the property’s landscape to native landscaping with low water Egyptian themed gardens.

Making the switch to natives has saved the park countless gallons of water. The drought tolerant gardens are surrounded by buildings designed with Egyptian and Moorish architecture and offer visitors a constant reminder of the elegance of Egyptian style. With several fountains, intimate seating space, and native gardens, visitors are may be pleased to find a sanctuary from the Silicon Valley hustle.



ROSICRUCIAN LABYRINTH PROJECT

SAN JOSE, CA



PROJECT GOALS:

Landscape Beautification, Water Conservation, Reduced Maintenance,
Planting of Natives for Habitat Enhancement

SERVICES PROVIDED:

Ecological Landscape Consulting, Landscape Construction, Irrigation Installation, Native Plant Selection, Project Management

OWNER:

The Rosicrucian Order, AMROC

GENERAL CONTRACTOR:

Blach Construction

ARCHITECT:

Prodis Associates Architects

PROJECT VALUE:

\$750,000



PROJECT DESCRIPTION:

The Rosicrucian Order of the English Language Jurisdiction has built a beautiful new Labyrinth with the assistance of Blach Construction, Prodis Associate Architects and Ecological Concerns Incorporated. The new Labyrinth is based on the design of the Chartres Labyrinth, which has inspired spiritual wayfarers for at least 750 years. The paths will be surrounded by native plants which create the outline of the labyrinth design. Around that will be an oak grove, sacred in many of the ancient mystery traditions. The entrance to the Labyrinth is also filled with cacti and succulents set into a gravel rock garden.

The new Labyrinth at Rosicrucian Park, will require little or no irrigation, resulting in a savings of hundreds of thousands of gallons of water each year. There were more than 1,000 new trees, shrubs and grasses planted in the Labyrinth, including many that attract and provide habitat for local birds and butterflies.

CSUMB 5TH AVENUE LANDSCAPE BEAUTIFICATION

SEASIDE, CA



PROJECT GOALS:

Landscape Beautification; Water Conservation; Reduced Maintenance; Planting of Natives for Habitat Enhancement

SERVICES PROVIDED:

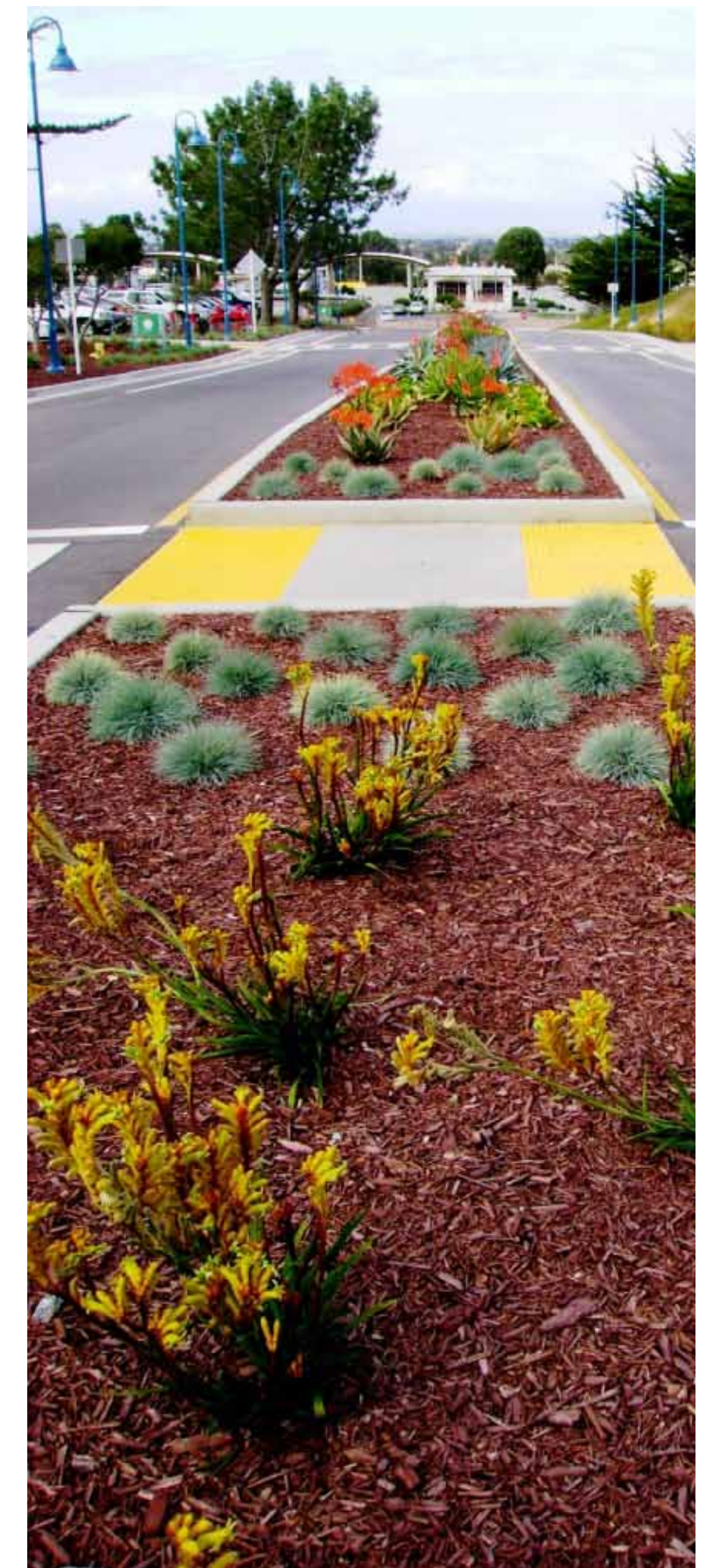
Landscape Construction, Maintenance

OWNER:

California State University, Monterey Bay

PROJECT VALUE:

\$350,000



PROJECT DESCRIPTION:

ECI worked with California State University to install hundreds of drought tolerant plants and thousands of feet off drip irrigation to their new campus quad, roundabout and main street. The planting included natives, succulents and Australian species.

SAN JOSE, CA

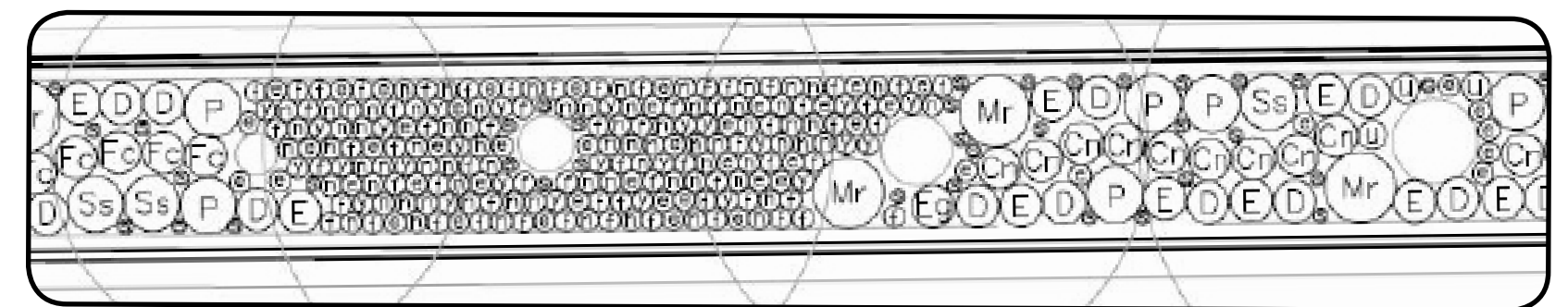


Increased Habitat, Low Maintenance Planting, Reduce City Water and Energy Dependency, Support Green Infrastructure and Building

Native Landscape Design, Botanical Consulting

City of San Jose

\$15,000



The City of San Jose hired ECI to design a planting plan for several medians in the middle of Hellyer Avenue, as a pilot project to test the viability of native plants for this application. The new 100% native planting scheme will replace traditional non-native landscape plants in order to more closely mimic nearby hills, as well reduce maintenance costs and water requirements. The design features a diverse palette of flowering shrubs and grasses, carefully organized for aesthetic structure and adherence to visibility requirements. Installation was completed by City contractors in Fall 2013.

RESOURCE CONSERVATION DISTRICT 7 LOW IMPACT DEVELOPEMENT SAMPLE SITES

SAN MATEO, CA



PROJECT GOALS:

Provide the aquifer with ground water recharge support, Support green infrastructure and building, Successfully fulfill grant requirements and successfully treat urban runoff before entering the ocean

SERVICES PROVIDED:

Native Landscape Design, Nursery Contract Grow, Landscape Installation and Maintenance, Project Management, Greywater and Rainwater Harvesting System Design, Project Management and Site Planning

OWNER:

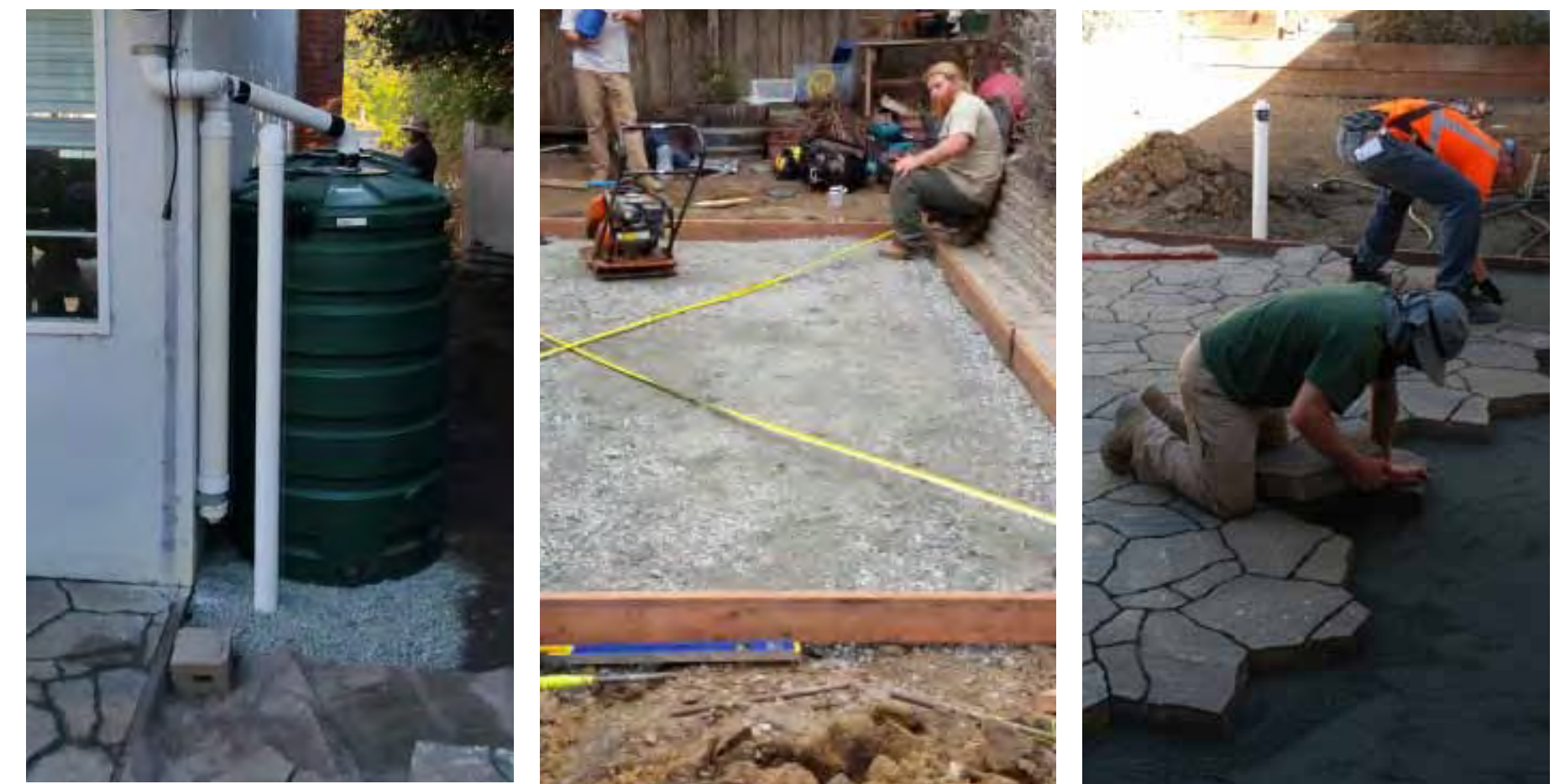
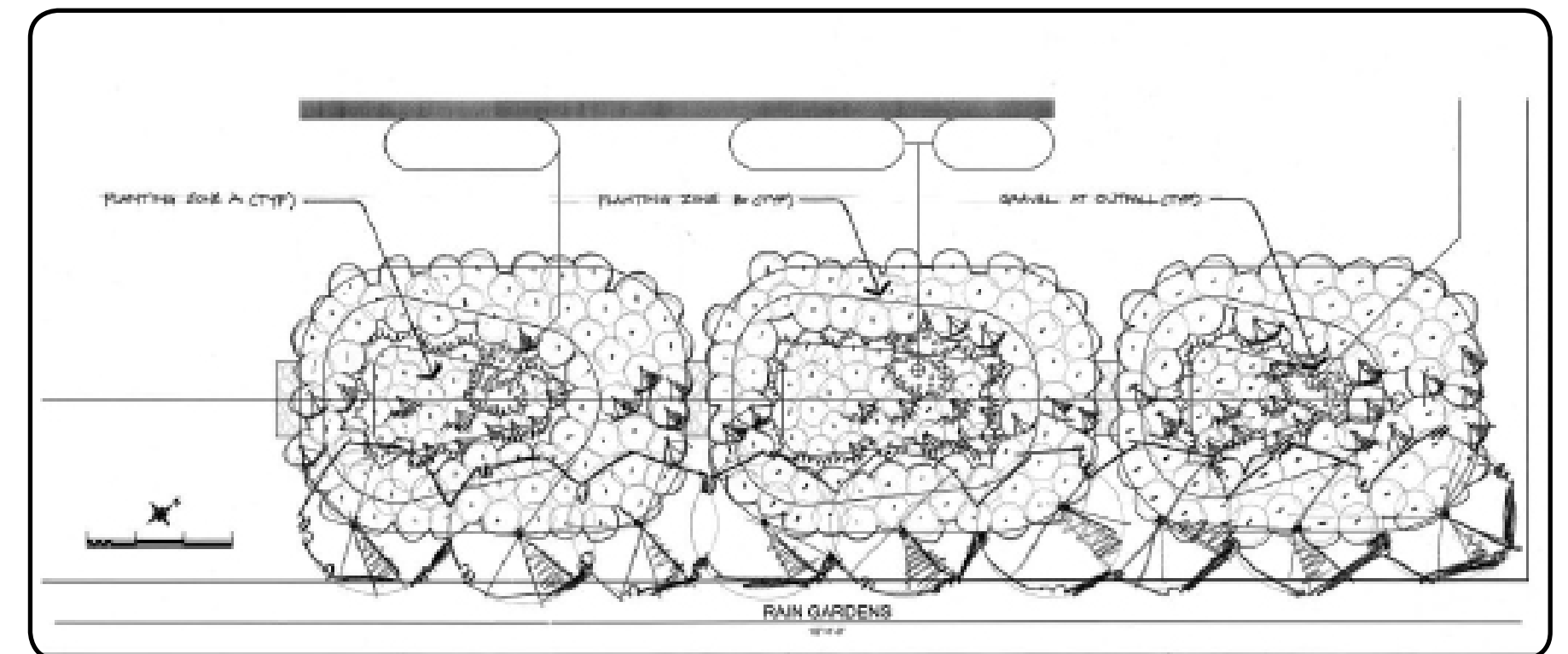
Various Homeowners

PROJECT ENGINEER:

San Mateo County Resource Conservation District

PROJECT VALUE:

\$350,000

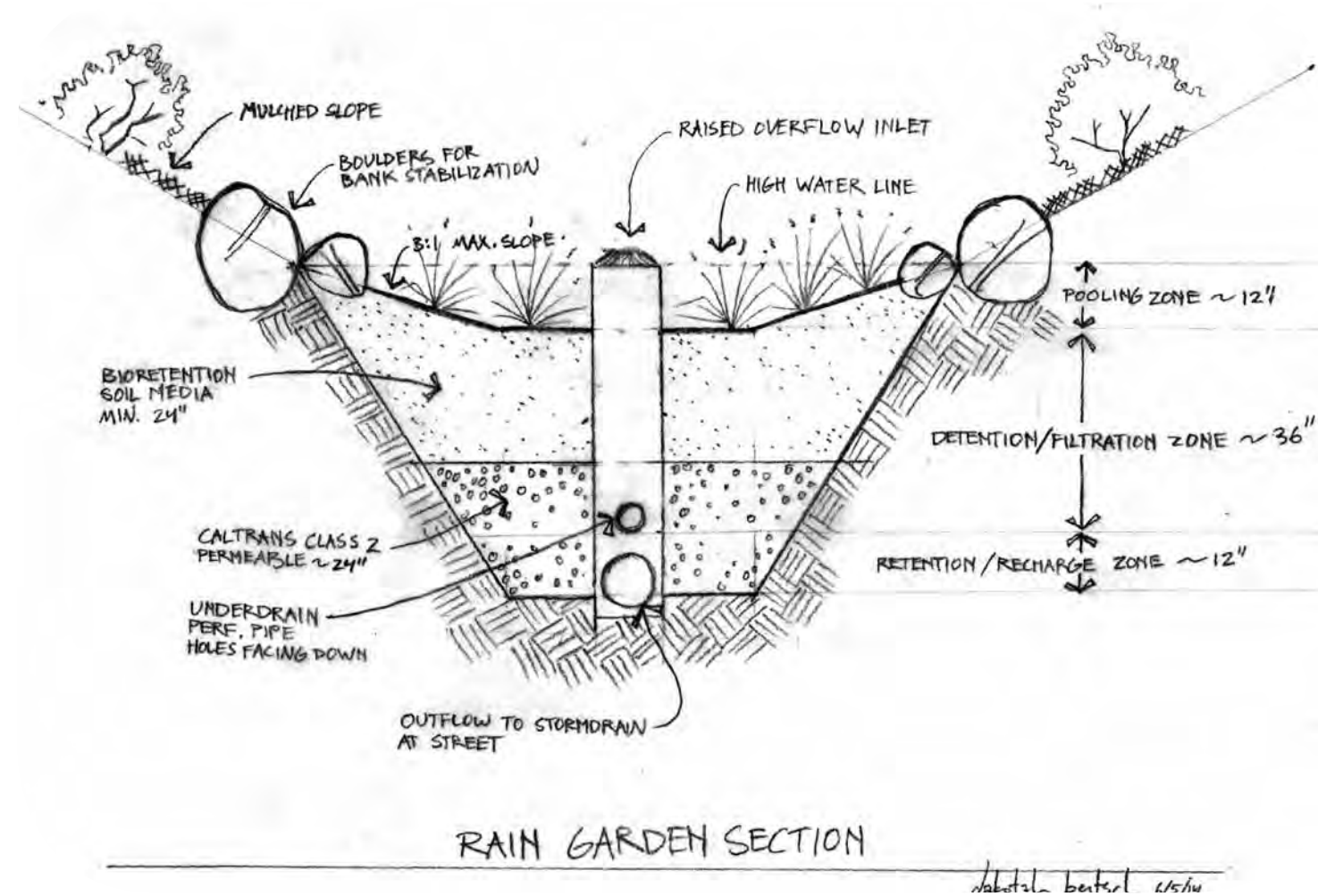


PROJECT DESCRIPTION:

The Resource Conservation District (RCD) of San Mateo worked with ECI implementing several Low Impact Development landscape plans for improving ground water retention and treating urban runoff before it enters the aquifer or ocean. The work was funded by grant money awarded to the RCD. There were seven lucky home owners that were able to have their landscapes remodeled and a few rainwater harvesting systems installed also.

LANDSCAPE AND RAINGARDEN DESIGN

SANTA CRUZ, CA



PROJECT GOALS:

LEED Platinum Certified Building, Low Maintenance Landscape, Ecological LID Stormwater Management, Groundwater Retention

SERVICES PROVIDED:

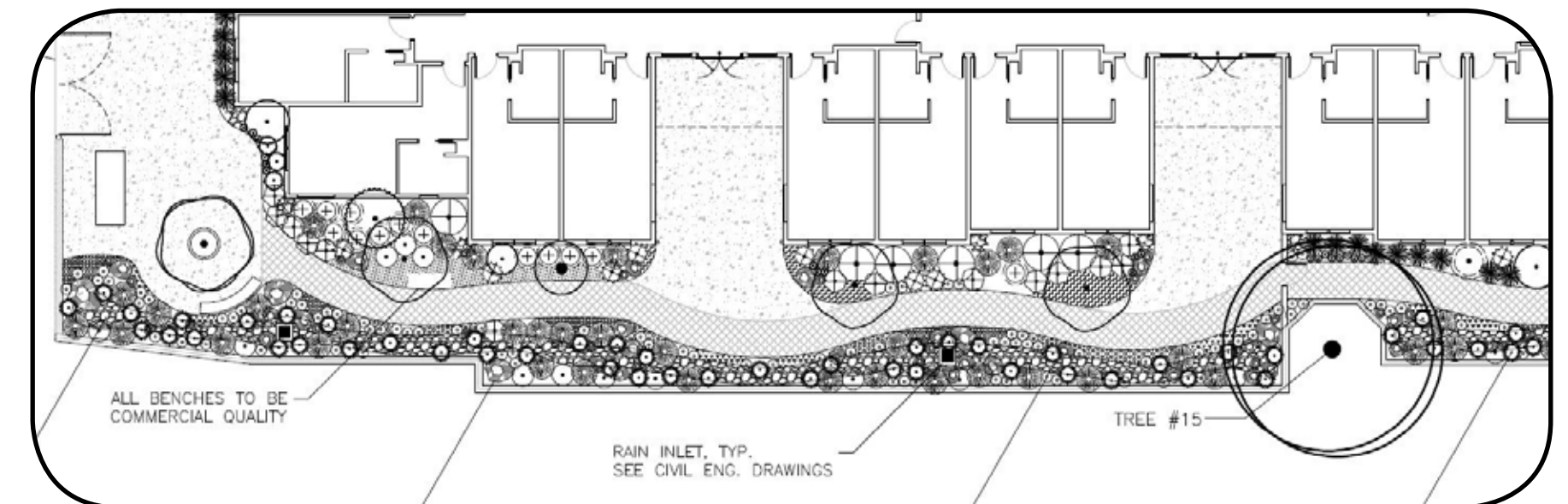
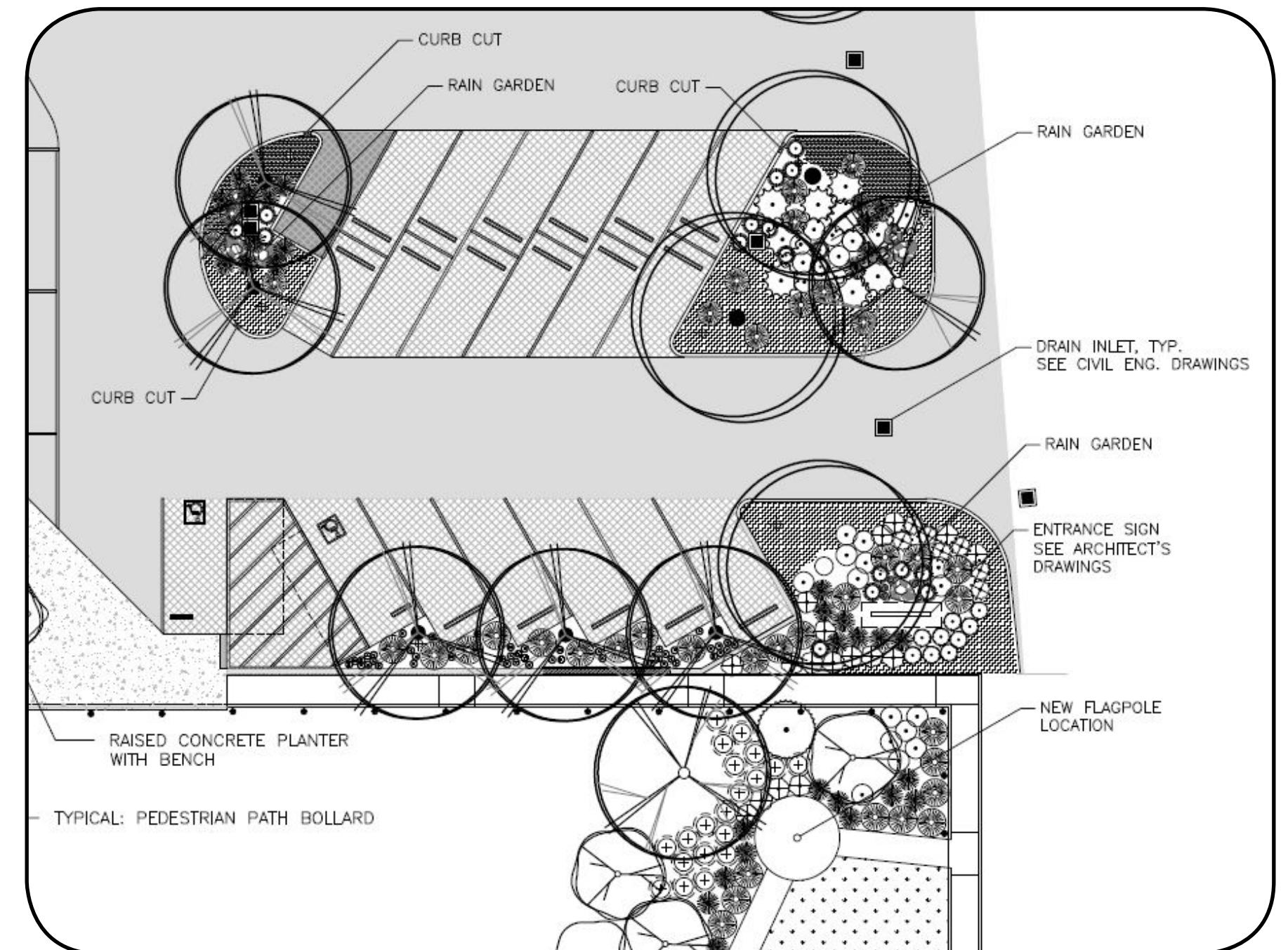
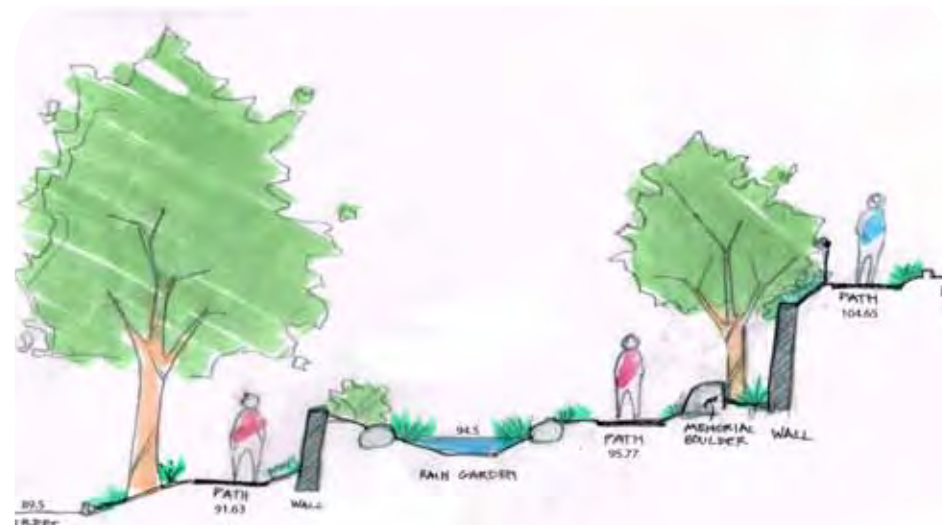
Ecological Landscape Design,
SWPPP, Site Planning,
Rainwater/Graywater Design,
Permitting Assistance

OWNER:

Seasons Management

PROJECT VALUE:

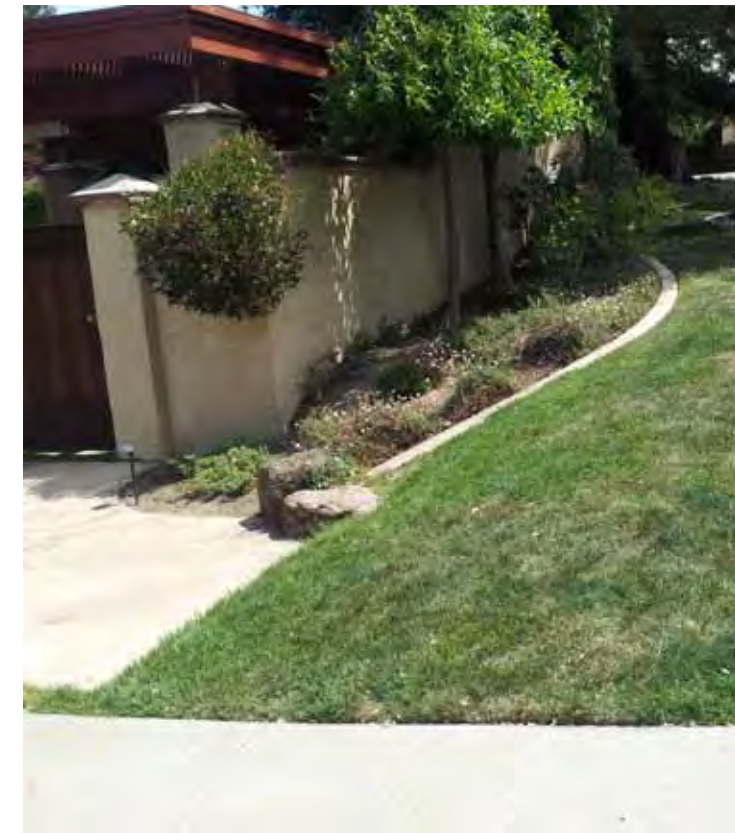
\$200,000



PROJECT DESCRIPTION:

ECI worked with city planners, architects, and developers to design the landscape for a medium sized senior housing facility in Santa Cruz. The landscape design helped the facility achieve LEED certification with many native plants, rain gardens, impervious pavers and bio-retention planters in the parking lot.

RESIDENTIAL PROJECTS



SERVICES PROVIDED:

Ecological Landscape Design, Rainwater and Graywater Design, Site Planning, Native Plant List, Nursery Contract Grow, Permeable Pavers, Fire Pits, Food and Vegetable Gardens, Rain Garden, Lawn Replacement, Rebate Assistance, Landscape Consultations and Construction, Maintenance, Project Management

ECOLOGICAL LANDSCAPES - COMMERCIAL & RESIDENTIAL

- Sustainable Landscape Design
- Low Impact Development Planning
- Stormwater Management
- Rainwater/Graywater
- Landscape Installation
- Landscape Maintenance
- Habitat Gardens



HABITAT RESTORATION

- Habitat Restoration Plans
- Erosion & Sediment Control
- Vegetation Management

ECOLOGICAL CONSULTING

- Site & Botanical Assessments
- Environmental Impact Reports
- Feasibility Studies
- Species Specific Mitigation Plans
- Monitoring & Reporting
- GIS/GPS Data

CALIFORNIA NATIVE PLANT NURSERY

- Site Specific Seed Collection
- Botanical Consultations
- Contract Growing
- Habitat Specific Native Plants



“While I was having my house remodeled, ECI was the best contractor we had on site out of 15 other tradesmen. I loved the quality that came from having a contractor that could design and install such a complicated rainwater and greywater system.” - **BEN BOYER**

“We are extremely pleased with Dakota’s design and ECI’s work. In addition to its beauty, our garden now has ecological value and contributes to the biodiversity of our local environment. Golden-crowned sparrows, black-capped chickadees, Monarch butterflies, bumblebees and other pollinators are daily visitors. My favorite part of the new landscape is a rain garden that harvests stormwater runoff from our roof and directs it into a vegetated swale where the soil filters and cleans the water instead of having it disappear down a storm drain. Thanks to ECI, our garden was certified a Monterey Bay Friendly Landscape, which means it meets the highest standards of sustainability and eco-friendliness.” - **TAI MOSES**

“We decided to work with ECI , and we are completely satisfied with their efforts and results on our behalf. They worked well with all the entities involved in this complicated project from the county, to the water district, our concrete guys and all other subs. They installed a 2500 gallon tank underground for us that filled up on the first rain we had in November, and their system will allow us to water our yard for free until the next rains come and fill the tank again, my only regret is we didn’t install the 5000 gallon tank as Bobby had recommended. It turned out that the county has started overseeing these systems, and the their requirements can impact the esthetics, and overall design, but working with Bobby Markowitz proved to be a great choice for us as he was able to work with the county, and our subs in a comprehensive manner to finish our project on time and on budget. I would recommend this company highly for any and all rainwater capture projects, as well as native designs and systems.” - **WILLIAM KENNEDY**